

Tilt 50 RTS

EN Instructions

FR Notice

NL Manual

ES Manual

Ref. 5122959A

HOME MOTION by

motrise®

CONTENTS

1. Prerequisite information	3	3. use and maintenance	9
1.1. Fields of application	3	3.1. Up and Down buttons	10
1.2. Liability	4	3.2. STOP function	10
2. installation	4	3.3. Favourite position (my)	10
2.1. Installation	5	3.4. Tilting	10
2.2. wiring	6	3.5. Additional setting	10
2.3. commissioning	6	3.6. Tips and recommendations for use	12
2.4. Tips and recommendations for installation	8	4. Technical data	12

1. Prerequisite information

1.1 Fields of Application

The Tilt 50 RTS is a motor specially dedicated to interior applications.

The Tilt 50 RTS can motorize wood venetian blinds.

The Tilt 50 RTS is a battery operated motor, powered with lithium primary batteries or NiMH batteries mounted with or without a solar pack. The motor can also be powered by a power supply.

Use only the below Somfy references with this motor :

Ref. 9018685 : 12V RELOADABLE TUBE (8 AA LITHIUM) + Ref. 9014834 : 8 AA LITHIUM BATTERY PACK

Ref. 9018608 : 12V RELOADABLE TUBE (10 AA NIMH) + Ref. 9018621 : 10AA NIMH BATTERIES

Ref. 9019034 : SOLAR PACK

Ref. 1822445 : 12V AC/DC Power Supply

Caution : Batteries must be installed as shown on the battery tube.

Do not mix type, brand or used batteries with new.

Warning : The Tilt 50 RTS is compatible only with the «Sunis Indoor WireFree™ RTS» sensor.

Warning : The Tilt 50 RTS cannot be used with sealed double glazing.



Please separate storage cells and batteries from other types of waste and recycle them via your local collection facility.

1.2 liability

Before installing and using the motor, please read **operating and installation guide carefully**. In addition to following the instructions given in this guide, the instructions detailed in the attached **Safety instructions** document must also be observed.

The motor must be installed by a motor and home automation professional, according to instructions from Somfy and the regulations applicable in the country in which it is commissioned.

It is prohibited to use the motor outside the fields of application described above. Such use, and any failure to comply with the instructions given in this guide and in the attached **Safety instructions** document, absolves Somfy of any liability and invalidates the warranty.

The installer must inform its customers of the operating and maintenance conditions for the motor and must provide them with the instructions for use and maintenance, and the attached **Safety instructions** document, after installing the motor. Any After-Sales Service operation on the motor must be performed by a motor and home automation professional.

If in doubt when installing the motor, or to obtain additional information, contact a Somfy adviser or go to the website www.somfy.com



Safety warning!



Caution!



Information

2. iNSTalla TiON



Instructions which **must** be followed by the motor and home automation professional installing the Tilt 50 RTS motor.



Never drop, knock, drill or submerge the motor.

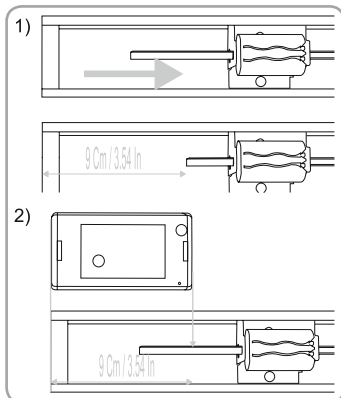


Install a separate control point for each motor.

2.1. iNSTalla TiON

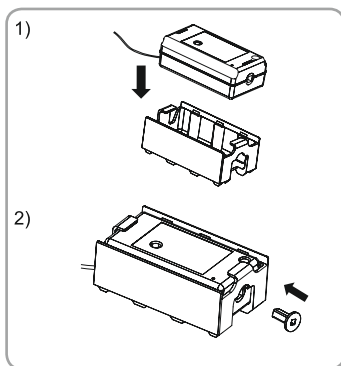
Shaft adaptation

- 1) Slide shaft to far side of the headrail until is 9cm / 3.54In from the end.
- 2) If shaft does not slide 9cm / 3.54In from the end, mark and cut shaft to remove 9cm / 3.54In from the end of the headrail (use motor to measure mark).
If needed, file the end of the shaft to remove any rough edges.



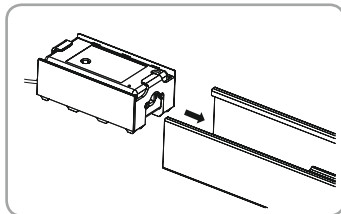
2.1.2. motor preparation

- 1) Put the motor into the appropriate headrail adaptor and secure snaps on top of motor.
- 2) If needed, press the shaft adaptor into the motor.



2.1.3. motor/headrail assembly

Position the blind to be fully open (horizontal).
Slide the motor into the headrail until the shaft is fully inserted into the motor.



2.2 WiriNg

▲ Cables which pass through a metal wall must be protected and isolated using a sheath or sleeve.

▲ Attach cables to prevent any contact with moving parts.

▲ The cable for the Tilt 50 RTS cannot be removed. If it is damaged, return the motor to the After-Sales department.

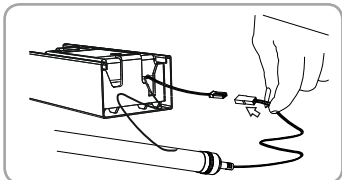


Leave the motor power supply cable accessible: it must be possible to replace it easily.



Do not unplug the battery when the motor is working.

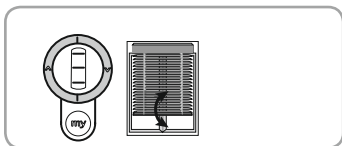
Plug the battery with the motor supply cable :



2.3. COMMISSIONiNg

2.3.1. Programming the rTS control point

Press the **up** and **down** buttons simultaneously on the RTS control point: the motorised product moves up and down and the control point is preprogrammed in the motor



2.3.2. Checking the direction of rotation

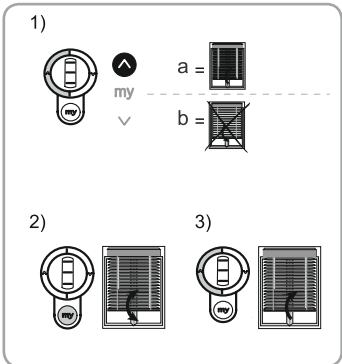
1) Press the **up** button on the RTS control point:

a) If the motorised product rises (a), the direction of rotation is correct: Move onto the section 2.3.3 entitled "Setting the end limits".

b) If the motorised product lowers (b), the direction of rotation is incorrect: Move onto the next step (2).

2) Press the **my** button on the RTS control point until the motorised product moves up and down: The direction of rotation has been modified.

3) Press the **up** button on the RTS control point to check the direction of rotation.



2.3.3. Setting the end limits

The end limits can be set in any order.

1) Raise the motorised product to the desired position by pressing the **up** button.

2) Press the **my** and **down** buttons at the same time until the motorised product moves.

The upper end limit is memorised.

3) Press the **my** button when the motorised product reaches the desired lowered position. If necessary, adjust the position of the motorised product using the **up** and **down** buttons.

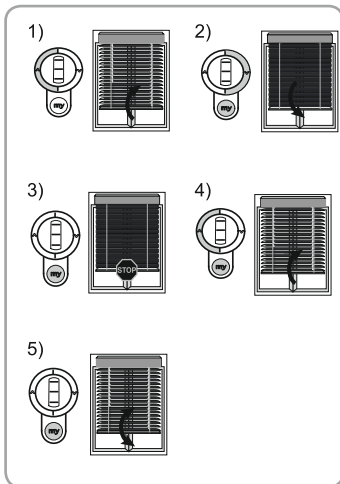
4) Press the **my** and **up** buttons at the same time until the motorised product moves.

The lower end limit is memorised. The motorised product rises and stops in the raised position.

5) To confirm the end limits, press the **my** button until the motorised product moves up and down.

The end limits are programmed.

▲ Do not set an end limit in a position able to raise the motorised product, as this could damage the motorised product and/or the motor in the long term.

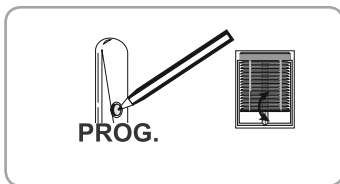


2.3.4. recording the rTS control point

The motorisation is in programming mode:

– Quickly press the PROG button on the RTS control point to be programmed:

→The motorised product moves up and down: this RTS control point is programmed in the motorisation.



if the motorisation is no longer in programming mode, repeat Step 2.3.1 then perform Step 2.3.4.

2.4. TiPS aNd rECOMMENDa TIONS fOr iNST alla TION

2.4.1. questions about the Tilt 50 rTS?

Observations	Possible causes	Solutions
The motorised product does not operate.	There may be some radio interferences.	Unplug the motor supply cable and reconnect the battery tube to the motor.
	One or more batteries have been mounted backwards.	Verify that batteries are all mounted in the correct manner.
	Batteries (inside battery tube) are weak.	Check whether the batteries are weak and replace if necessary.
	The control point battery is weak.	Check whether the battery is weak and replace it if necessary.
	The control point is not compatible.	Check for compatibility and replace the control point if necessary.
	The control point used has not been programmed into the motor.	Use a programmed control point or program this control point.

2.4.2. re-setting the end limits

readjusting the upper end limit

- 1) Press the **up** button to bring the motorised product to the end limit to be readjusted.
- 2) Press the **up** and **down** buttons at the same time until the motorised product moves up and down.
- 3) Press the **up** or **down** button to move the motorised product to the new desired position.
- 4) To confirm the new end limit, press the **my** button until the motorised product moves up and down.

readjusting the lower end limit

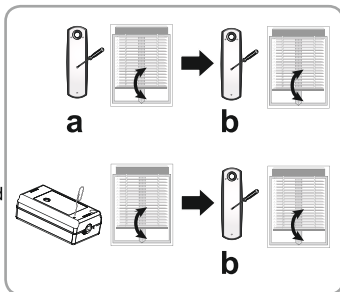
- 1) Press the **down** button to bring the motorised product to the end limit to be readjusted.
- 2) Press the **up** and **down** buttons at the same time until the motorised product moves up and down.
- 3) Press the **up** or **down** button to move the motorised product to the new desired position.
- 4) To confirm the new end limit, press the **my** button until the motorised product moves up and down.

2.4.3. adding or deleting a rTS control point

Find an RTS control point (A) programmed in the motor.

Press and hold the RTS programmed control point (A) PROG button or the motor PROG button until the motorised product moves up and down: the motor is in programming mode.

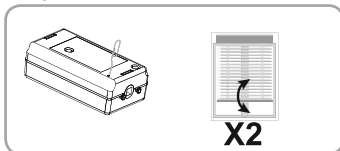
Quickly press the RTS control point (B) PROG button to add or delete: the motorised product moves up and down and the RTS control point is programmed or deleted from the motor.



2.4.4. Erasing the control point from the memory of the motor

To delete all the programmed control points, press and hold the motor PROG button until the motorised product moves up and down twice.

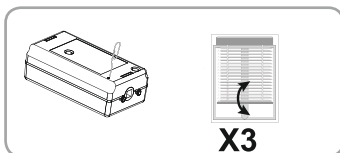
All the control points are deleted.



2.4.5. Erasing the memory of the motor

To reset the motor, press and hold the PROG button on the motor head until the motorised product moves up and down 3 times.

All the settings are erased.



3. uSE aNd maiNTENaNCE



This motor is maintenance-free



These instructions only describe the use with a "Telis modulis" control point. For use with an other control point, refer to the corresponding manual.

3.1. uP aNd dOWN buTTONS

Briefly press the **up** or **down** button fully raise or lower the motorised product.

3.2. STOP fuNCTiON

The motorised product is moving.

- **Briefly** press the STOP button: the motorised product stops automatically.

3.3. f avOURiTE POSiTiON (my)

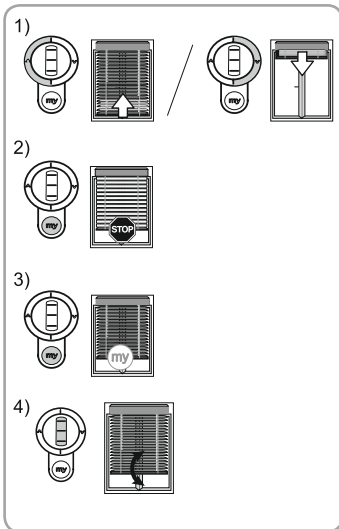
To use the favourite position (my):

- **Briefly** press **my**: the motorised product starts to move, and stops in the favourite position (my).

To modify or delete the favourite (my) position, see the section entitled "Additional settings".

3.4. Til TiNg

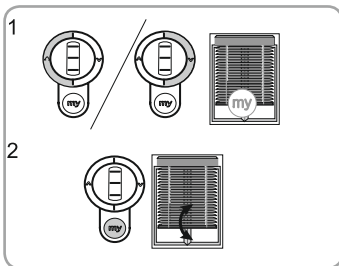
To tilt the slats, use the scroll of the remote control, until the slats reach the desired position.



3.5. addiTiONal SETTiNgS

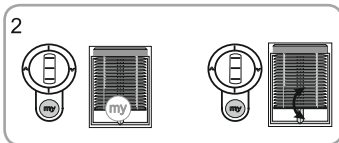
3.5.1. record or modify the favourite position (my)

- 1) Place the motorised product in the desired favourite position (my).
- 2) Press **my** until the motorised product moves up and down: the desired favourite position (my) has been programmed.



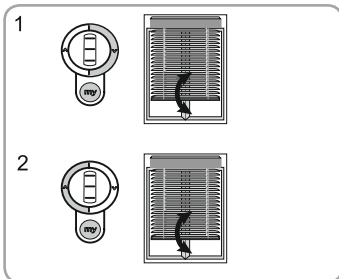
3.5.2. deleting the favourite position (my)

- 1) Press **my**: the motorised product starts to move, and stops in the favourite position (my).
- 2) Press **my** again until the motorised product moves: the favourite position (my) is deleted.



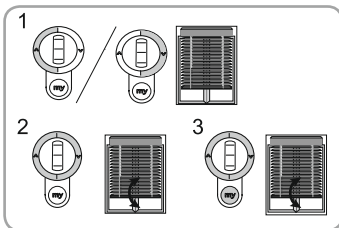
3.5.3. adjusting the tilting speed

- 1) To decrease the tilting speed, press and hold the **my** and **down** buttons simultaneously until the motorised product moves up and down. Repeat as needed. If the motorised product does not move up and down, then the minimum setting has been reached.
- 2) To increase the tilting speed, press and hold the **my** and **up** buttons simultaneously until the motorised product moves up and down. Repeat as needed. If the motorised product does not move up and down, then the maximum setting has been reached.



3.5.4. modifying the wheel rotation direction

- 1) Move the motorised product away from the end limits.
- 2) Press the **up** and **down** buttons simultaneously, until the motorised product makes an Up and Down movement.
- 3) Press the **up**, **my** and **down** buttons simultaneously, until the motorised product moves up and down, to reverse the wheel rotation direction.



3.6. TIPS aNd rECOMMENDa TIONS fOr uSE

questions about the Tilt 50 rTS?

Observations	Possible causes	Solutions
The motorised product does not operate.	One or more batteries have been mounted backwards.	Verify that batteries are all mounted in the correct manner.
	Batteries (inside battery tube) are weak.	Check whether the batteries are weak and replace if necessary.
	The control point battery is weak.	Check whether the battery is weak and replace it if necessary.

If the motorised product still does not work, contact a motorisation and home automation professional.

4. TEChNiCal da Ta

Power supply	12 Vdc SELV
Radio frequency	433.42 MHz
Torque	1 Nm
Up speed	10 rpm
Down speed	10 rpm
Electrical insulation	III
Minimum distance between two end-limit	0,25 turn
Maximum distance between two end-limit	5 turns
Maximum running time	1 min
Operating temperature	0°C to + 60°C
Protection rating	IP 20 (For indoor use only)



Somfy hereby declares that the product conforms with the essential requirements and other relevant provisions of the European Directives applicable for Europe. A Declaration of Conformity is available at www.somfy.com/ce.